



Woods House, 7 Gatliff Road
London SW1W

GARTON JONES.COM



Woods House, 7 Gatliff Road London, SW1W

£600 Per Week

A well-presented and tastefully decorated one DOUBLE BEDROOM apartment to RENT of approx. 484 sq.ft (45 sq.m) in Woods House, Grosvenor Waterside. This FURNISHED property benefits from an OPEN PLAN reception room with a Juliette style balcony and fitted kitchen, double bedroom with fitted wardrobes and modern bathroom and storage cupboard. On-site Sainsbury's Local, coffee shop and private kids' club and Gym on site (payable). SLOANE SQUARE and VICTORIA station with access to Gatwick Express trains are within walking distance.

Available via Garton Jones on-site office at Grosvenor Waterside (underneath Bramah House).

Council Tax band: D (Westminster City Council).

12 month minimum term. 5 week deposit required.

EPC Rating: TBC

EPC certificate available on request.

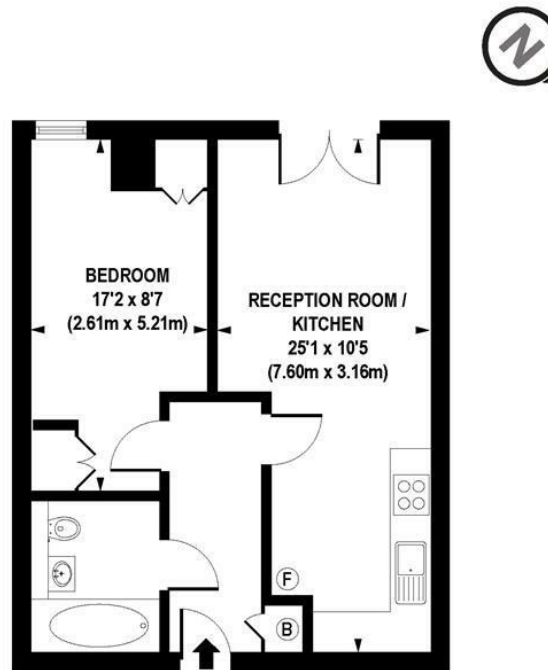
- 484 Sq.ft (45 Sq.m)
- 1 Double Bedroom
- Open Plan Reception Room
- Kitchen
- Modern Bathroom
- 24 Hour Concierge
- On-Site Sainsbury's, Crèche, Coffee Shop & Private Kids club
- Within Walking Distance Of Victoria Station & Sloane Square
- On-Site Gym (Payable)
- Available Immediately

GARTON JONES.COM

8 Gatliff Road
Grosvenor
Waterside
Chelsea
London
SW1W 8DP

Sales +44 (0) 20 7730 5007
gws@gartonjones.com
www.gartonjones.com





APPROX. GROSS INTERNAL AREA FLOOR 484 sq. ft / 44.99 sq. m

Floorplan is for illustrative purposes only and is not to scale.
Every attempt has been made to ensure the accuracy of the floorplan shown, however all measurements,
fixtures, fittings and data shown are an approximate interpretation for illustrative purposes only.
Liability for errors, omissions or mis-statement through negligence or otherwise is hereby excluded.

CP CREATIVE
PROPERTY MARKETING

